

KIT REVIEW . . . AMTRON SIGNAL INJECTOR

THE ACCOMPANYING PHOTOGRAPH ILLUSTRATES THE Amtron Signal Injector kit, Ref. No. UK220, as received by the purchaser before assembly. All the parts required for construction of the injector, as well as the assembly instructions, are securely packed in a plastic 'blister' which is backed with foam plastic and fitted to a stout card.

The signal injector consists of a 500Hz multivibrator which, when completed, is housed in a cylindrical tube with a probe at one end. There is also a flexible lead terminated in a crocodile clip which connects to the chassis of the equipment into which the signal is being injected. Useful harmonics are given up to approximately 30MHz.

This is one of the simpler kits available from Amtron, whose current catalogue lists more than 130 items. These include power supplies, hi-fi amplifiers, musical instrument accessories, short wave equipment, capacitor ignition systems for cars, burglar alarms and test gear. The range is exceptionally wide and covers virtually all the interests likely to be exhibited by the keen electronics enthusiast. A photograph is given in the Amtron catalogue for each item, together with technical information.

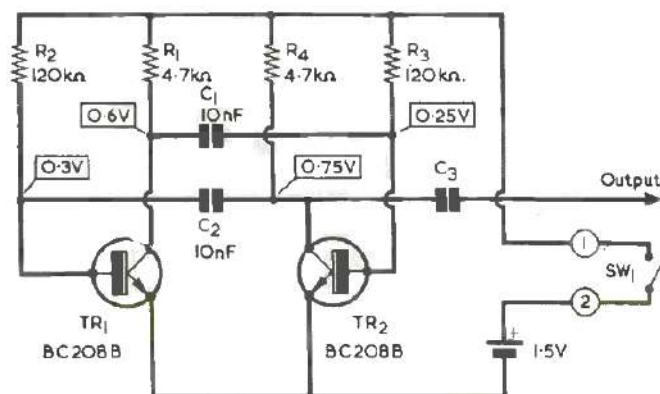


Fig. 1. This circuit diagram is reproduced from the assembly instructions for the Amtron signal injector

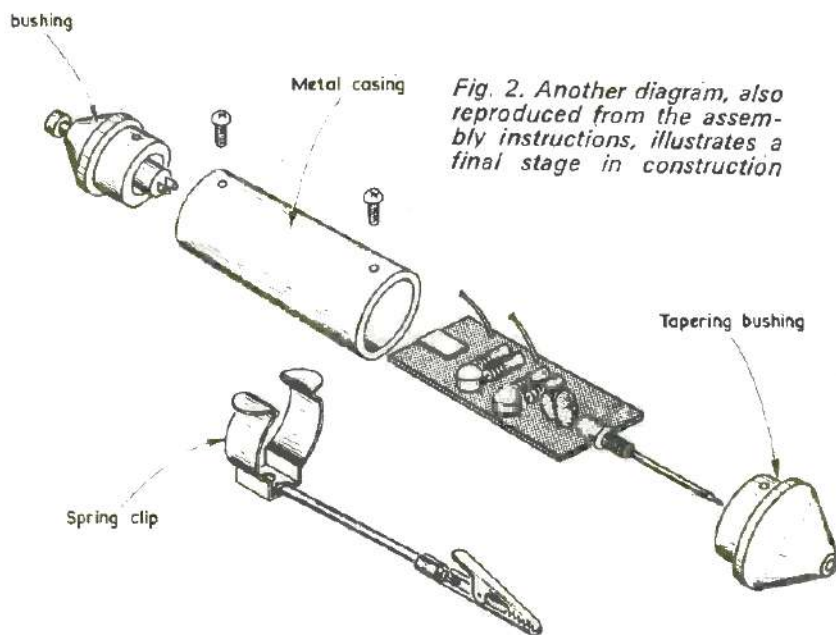


Fig. 2. Another diagram, also reproduced from the assembly instructions, illustrates a final stage in construction

The accompanying diagrams, which are reproduced from the assembly instructions for the signal injector kit, demonstrate the clarity with which the constructional information is given.

One diagram shows the circuit of the injector, and is accompanied in the text by a description of its operation. The value shown for C1 and C2, 10nF, is equivalent, incidentally, to 10,000pF. Test voltages appear in the rectangles alongside the appropriate circuit points.

The second diagram gives details of a final stage in the assembly of the injector, in which the various parts are being fitted to the cylindrical metal casing.

These are only two of the eight diagrams in the instructions and they are included in this review to enable readers to judge for themselves the manner in which constructional details are presented.

As already mentioned, the signal injector kit is one of the simpler projects available from Amtron. Further details on Amtron kits may be obtained from Amtron U.K., 4-7 Castle Street, Hastings, Sussex.